



**HK HYDRAULIK-
KONTOR GmbH**

Your partner for hydraulic drivetechnology,
mobile and industrial hydraulics

over 40
years



**Certified
Excellence**

rexroth
A Bosch Company

We achieve movement



For more than 40 years we have been in the hydraulics as a competent partner and are already being advised in the 2nd generation with over 35 employees at 2 locations in Germany. As certified Bosch Rexroth Solution Partner in mobile hydraulics, we have been supporting manufacturers from a wide variety of industries.

CUSTOMIZED SPECIAL CYLINDERS

By expanding the product range with special cylinders, we offer together with our partner msa_technology our customers the possibility of the hydraulic components to be delivered as a complete system.

Since the beginning of the cooperation with the company msa_technology in 2020 we have already realized various special cylinders for different industries:

- **Mining (surface and underground technologies)**
- **Cement, ore and coal industry**
- **steel and metallurgical industry, roller mill technology**
- **concrete block plants**

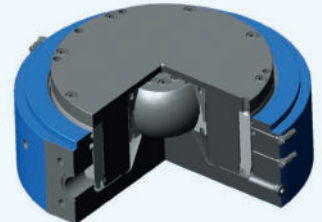
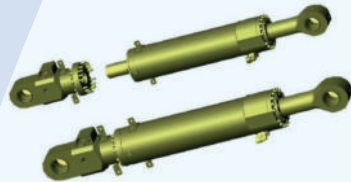
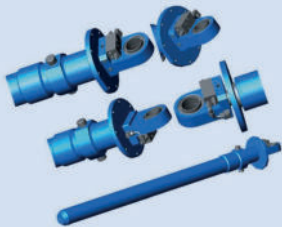
Our partner company msa_technology looks back on years long experience in the field of special cylinders. Due to the cooperation, we offer our customers two competent partners with know-how in the field of hydraulics application technology.

With individual and competent customer advice we develop precisely to customer requirements aligned customized products.

Our service includes customer care of application technology via engineering and the construction, commissioning and installation.

We also carry out problem-related repairs with improvements through customer related optimization from, e.g. special coating of the piston rod for extreme applications (alkalines/salts), improvement the buckling resistance due to design changes, Changes the sealing system to adjustable V-ring for longer service life.

Our delivery program also includes the supply of spare parts for machines in the cement industry, such as special flat cylinders for presses from vertical mills, sealing kits and ball joints for flat cylinders, bellows, races and rubber, pressure plates.



BOSCH REXROTH: PROPORTIONAL LOAD SENSING VALVES M4, ED AND EDG SERIES

As a Bosch Rexroth M4 logistics partner, we design control blocks for the series M4, ED and EDG according to customer specifications. We offer support in the design of the control blocks with the creation of circuit diagram and 3D data. The assembly and testing is carried out in the Unterbreizbach plant. Project-related, customer-oriented delivery times are possible due to storage of the individual components. The modular ED series mobile control block from Bosch Rexroth Oil Control offers unique options for LS control with integrated functions such as pressure and flow valves. The open or closed center system (for constant or variable displacement pumps) with LUDV allows the user to load-independent Control multiple consumers at the same time. The new EDG series offers connection to CANBus and the combination of electronic control with additional hand lever operation. The control blocks are used in many industries: aerial work platforms, forklifts, truck-mounted cranes, mobile cranes, sprayers, combines, telehandlers, backhoes, excavators, drills, refuse trucks, sweepers.



Series M4-12:
with special inlet plate and shut-off valve



Hybrid solution:
M4-12 with ED valve



New series EDG:
Variant CAN BUS and hand lever

PUMPS AND MOTORS

Gear pumps / motors

External gear pumps

volume $vg = 0.25 - 250 \text{ cm}^3/\text{rev}$

Modular system with many options for attachments and combination

For operating pressures up to 300 bar (series 2.6)

Make : Bosch Rexroth, HPI

Vane pumps / motors

Constant or adjustable, double pumps

Series e.g. VT6, VT7, V10, V20

Internal gear pumps

For industrial applications and vehicle drive (Unimog)

Sizes $vg = 3.6 - 250 \text{ cm}^3/\text{rev}$, $p_{max} = 330 \text{ bar}$

Axial piston pumps / motors

With constant or adjustable volume

Swashplates or bent-axis design

for open or closed circuit

variable with different controls, e.g.

pressure, power, flow, LS (LoadSensing)

Truck PTO Pumps

Single and double circuit piston pumps for trucks

constant or adjustable flow

Cast iron gear pumps with 3- and 4-hole flange

Planetary gears for mobile and industrial applications

$T = 100 - 65,000 \text{ kNm}$ wheel and final drives for vehicles

Splitter gear box for diesel attachment

Radial piston pumps / motors

Size $vg = 2.1 - 5,400 \text{ cm}^3/\text{rev}$, low-speed motors

Geroler / Gerotor orbital motors

Low-speed motor from $vg = 8 - 940 \text{ cm}^3/\text{rev}$

Combination with directly flangeable brake

or integrated brake, also available as wheel motor

Repair with test bench, spare parts service

Repair and testing of piston pumps and

- motor, valves, cylinders

Various makes of e.g. Bosch Rexroth,

Samhydraulic, Oilgear, Vickers, Eaton, Sauer,

Axial Pump, Comer, Brevini, Linde, Hydrokraft,

Kawasaki, SAI, Staffa

Testing on our own diesel generator test bench up to 200kW

Spare part service: seals, bearings, repair kits, piston sets, rotating groups



VALVES FOR MOBILE AND INDUSTRIAL APPLICATIONS

CETOP valves CETOP 01 - 08 / NG 4 – NG32

Valves in endplate and sandwich plate design
Spool valve design, direct or pilot operated,
directional, pressure relief or pressure reducing function,
Shut-off valves, overcenter valves also as proportional valve

Inline valves / integrated blocks

For directional-, pressure-, flow control or pressure reducing function,
Shut-off valves, overcenter valves, Cartridge valves 12, 24, 48 VDC and 240 VAC
Ball valves, flow dividers, check valves

Mobile directional valves Series BM / BF / BC

in sectional or monoblock design
for $Q_{max} = 20/30/40/70$ or 180 l/min
Up to max. 300 bar Make: BLB
Flow regulator in the input section or on each section
inlet pressure relief valve
electric 12/24 volt or electric with hand lever (double stage)
hydraulically or pneumatically controllable as well
with joystick / cable remote control with micro switch option

Electrohydraulic proportional directional valves / Proportional load sensing valves in sectional design

For open center (constant pump) and closed center
(LS control pump) for electrical or hydraulic joystick control

Series M4-12 / M4-15

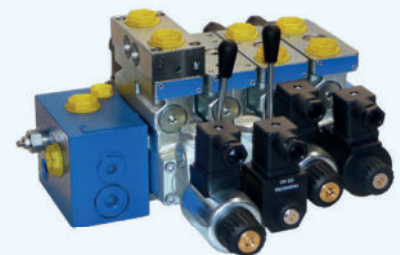
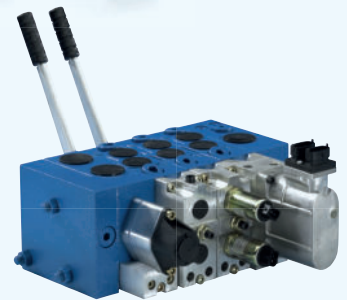
For up to 10 sections, up to 200 l/min per section, inlet up to 300 l/min
 $p_{max} = 410$ bar

ED series and EDG series

For up to 10 sections, up to max 60 l/min, p_{max} 350 bar
in various versions: with LS, with built-on valves,
with b/w, proportional or hydraulic control
with hand lever and electrical actuation 12/24 volts
ED series: with LUDV function (flow sharing) through
downstream pressure compensator
EDG series: with upstream pressure compensator
available with CAN BUS: CAN Open
Make Bosch Rexroth, Control e.g. with BODAS mobile electronic system

Electrical control and switch cabinets

With control and regulation circuits, frequency converters for
mobile or industrial applications



HYDRAULIC CYLINDERS

Standard cylinder

Hydraulic cylinders according to DIN, CETOP and metallurgical standards with different types of attachment:

Swivel eyes, trunnions, flange mounting

Special / customized cylinder

manufacture and repair

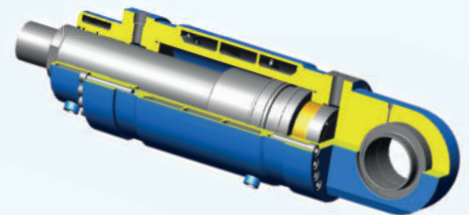
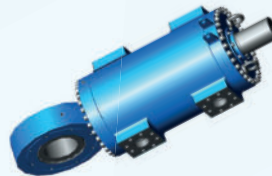
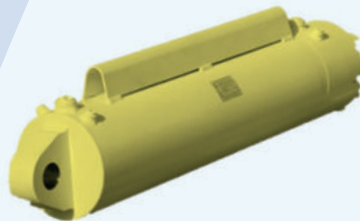
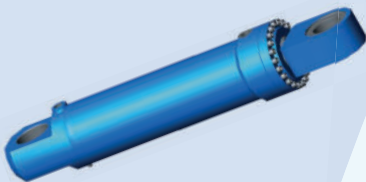
Construction in 3D according to customer specifications, specifically to the customized application with possible special options:

- integrated valves and sensors
- Bolted valve blocks
- Position measuring system
- Special coating
- Hydraulically releasing spring return
- Internal locking
- Water cooling
- purge air
- Bellows for heat protection

Designs: differential cylinder, plunger, telescopic cylinder, support cylinder, spring cylinder, flat cylinder, flat cylinder with wobbling piston, short-stroke cylinder

Applications: Mining, vehicle construction, impact mechanism technology, presses, agricultural technology

Functions: e.g. support cylinder, lifting cylinder, steering cylinder, carriage cylinder, rob cylinder, tipping cylinder, Pivoting cylinder, shifting cylinder, tensioning cylinder, locking cylinder, clearing blade cylinder



HYDRAULIC GENERATORS, COMPRESSORS AND WATER / VIBRATION PUMPS

HG	hydraulically driven generators	3.5 - 80 KVA
HPW	hydraulically driven water pumps	200 - 1,000 bar
HK	hydraulically driven compressors	400 - 10,000 ltr/min
	piston, vane and screw compressors	
HVB	hydraulically driven vibration pumps	1 - 20 to
	for excavator arm / shovel	
HPI	hydraulically driven pressure intensifier	700 bar
ST	high pressure cleaning equipment	



Make: Dynaset



COMPONENTS FOR HYDRAULIC SYSTEMS

Oil filter

Hydraulic oil filter for suction / pressure / return use
In-line and in-tank versions
with optical / electrical display, suction baskets
High-pressure filter for pipeline installation
Make: OMT

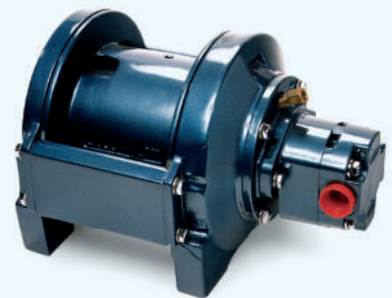


Tanks and tank accessories

Standard steel and aluminum oil reservoir
Vehicle tanks complete with oil filter, gauge and filler breather
Accessories: oil level indicators, filler aerators, level switches

Butterfly valves / compensators

Flaps and compensators NW25 – NW125
with electrical or mechanical limit switch
Make: ASA



Oil cooler

Oil / air, oil / water cooler 12 / 24 V DC, 230 / 400 V AC
or with hydraulic motor
Plate heat exchanger, tube cooler
Make: ASA, OMT



Accumulator

Bladder, diaphragm or piston accumulator
For high pressure up to 1000 bar and up to 500L

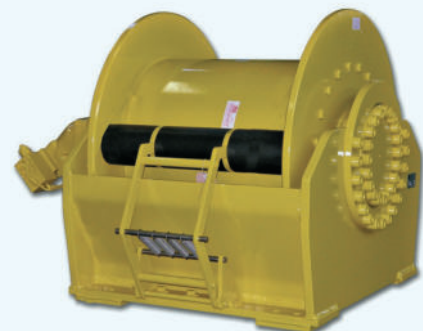


Hose reel

Single and double hose reel
in combination with electric cable
for oil, air or water hoses
stainless steel version

Lifting and pulling winches

Hydraulic lifting, drilling rig and ship winches
Lifting power 5 kN - 150 kN
Tensile force 20 kN to 150 kN
with 4.5 times reverse speed or as
free fall winch
Rope pressure roller, limit switch
Torque monitoring according to CE standard
Electric and hydraulic traction winches
Electrical 12V, 24V, 230/400 V up to 45 kN
Make: TMA, TWG (Pullmaster, Lantec, dp)



Accessories

Pump / motor connection flanges
CETOP hydraulic blocks for
couplings and bellhousings
electromagnetic clutches
Temperature and pressure switch
hand pumps
Special and ORFS fittings



POWER UNITS

Electric pumps / micro / mini / compact power units

for lift devices, tail lifts, lifting platforms and mini cranes or other application

with DC (12V,24V,48V,80V) or AC motor

with integrated pressure relief valve, integrated poppet valves

or directional control valves

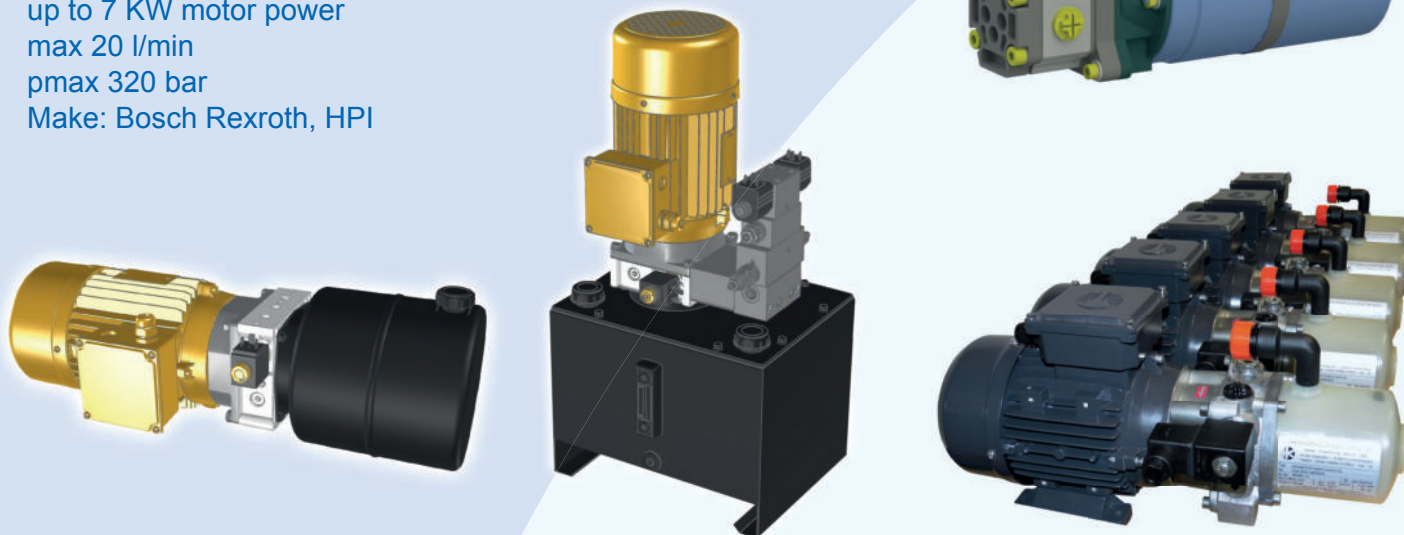
with plastic or steel tank

up to 7 KW motor power

max 20 l/min

pmax 320 bar

Make: Bosch Rexroth, HPI



Air driven hydraulic units

Hydraulic air pressure intensifier as compact units

up to a pressure ratio of 1:80, i.e. $p_{max} = 560 \text{ bar}$

Make : HEYPAC



Special units according to customer specifications

for industrial and mobile applications

with constant or variable pumps

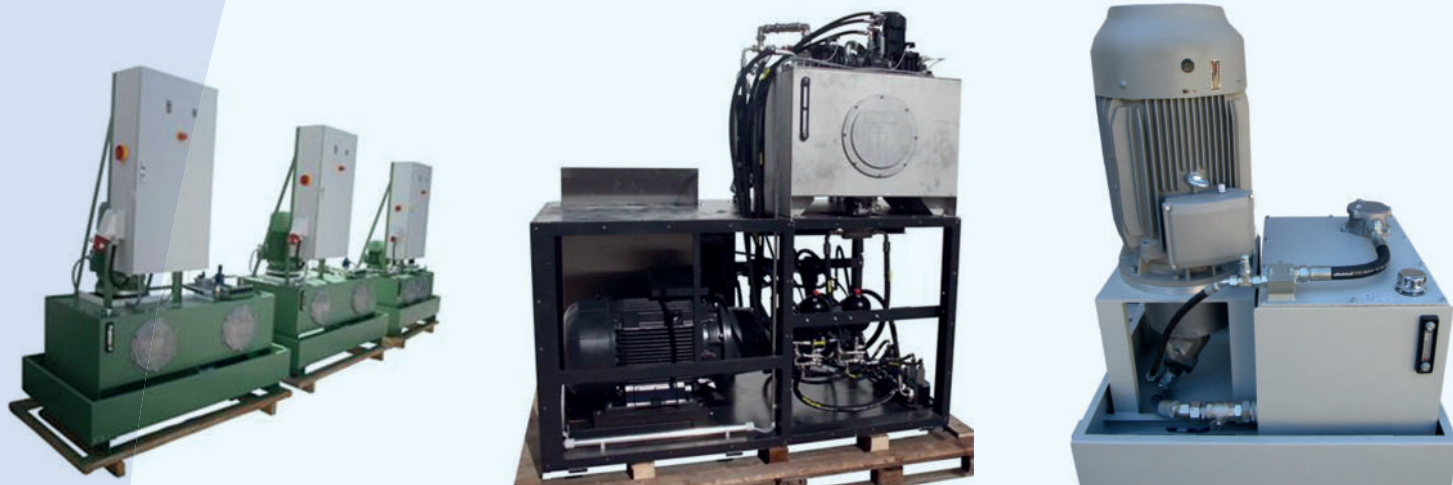
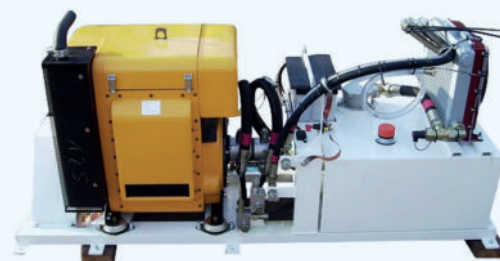
AC motor up to 250 KW

up to 1500L tank volume or with diesel / petrol engine

Diesel and petrol units

with soundproof housing

with 3D construction



Who are we?

- Your partner for hydraulic drive technology, mobile and industrial hydraulics.
- We are a medium-sized company with 35 employees at two locations.
- As a Bosch Rexroth Certified Excellence Solution Partner for mobile hydraulics, we advise and we supply customers from the project planning to the commissioning of complete hydraulic systems e.g. travel drive controls, working hydraulics, closed loop hydraulic systems



**HK HYDRAULIK-
KONTOR GmbH**

We offer:

- Trade in hydraulic components and spare parts
- Project planning of customer-specific systems / power units / cylinder
- Service repairs / assembly / commissioning
- Warehouse for customer-oriented delivery times

**Certified
Excellence**

rexroth
A Bosch Company

HK HYDRAULIK-KONTOR GmbH
Gerlingweg 86
D-25335 Elmshorn
Tel.: 04121-8006-0
Fax: 04121-8006-20



HK HYDRAULIK-KONTOR GmbH
An der Distelliete 1
D-36414 Unterbreizbach
Tel.: 036962-51508-0
Fax: 036962-51508-20



www.hk-hydraulik-kontor.de
info@hk-hydraulik-kontor.de

Our service departments in Elmshorn and Unterbreizbach have been repairing for decades hydraulic piston units such as axial and radial piston pumps / motors of various manufacturer. With multiple pump and motor test benches and the 200KW diesel generator test bench also larger units can be tested. We stock various spare parts for carrying out short-term repairs.



We are certified according to DIN EN ISO 9001:2015

